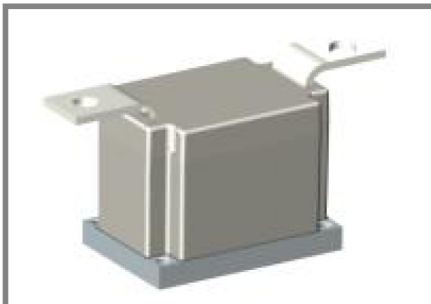


SKKE 1200



SEMIPACK® 6

Rectifier Diode Modules

SKKE 1200

Features

- Precisious metal pressure contacts for high reliability
- UL recognized, file no. E 63 532

Typical Applications

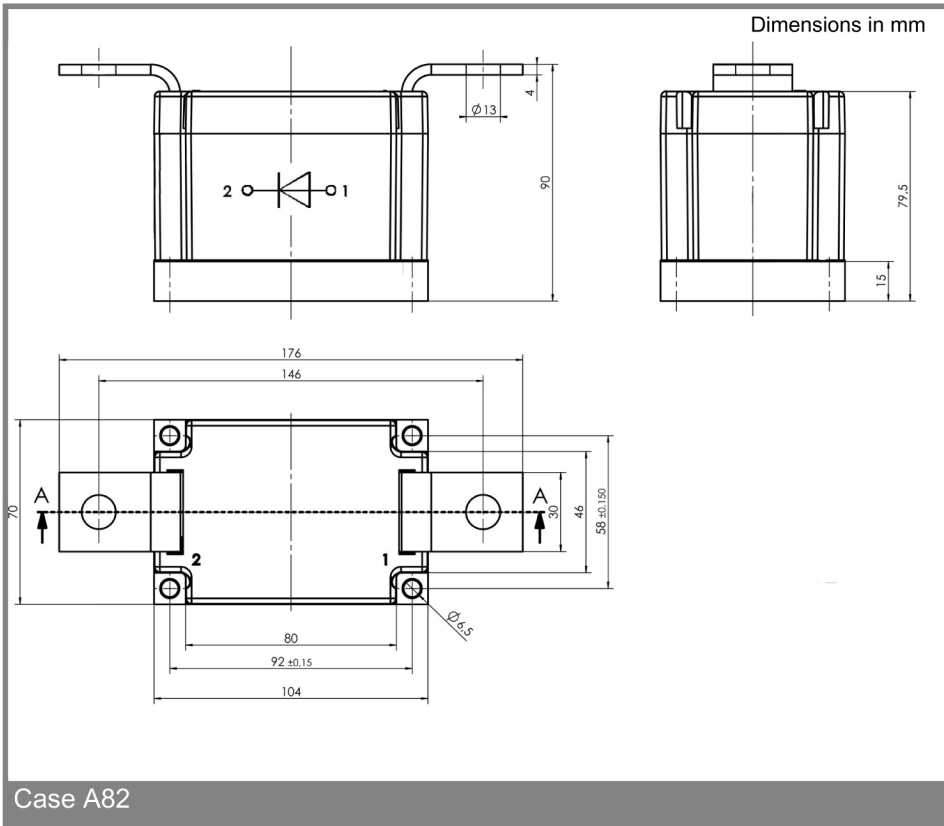
- Rectifiers

V_{RSM} V	V_{RRM} V	$I_{FRMS} = 2000$ A (maximum value for continuous operation) $I_{FAV} = 1180$ A (sin. 180; $T_c = 100$ °C)	
1900	1800	SKKE 1200/18 H4	
2200	2200	SKKE 1200/22 H4	

Symbol	Conditions	Values	Units
I_{FAV}	sin. 180; $T_c = 100$ °C	1180	A
I_{FSM}	$T_{vj} = 25$ °C; 10 ms	45000	A
	$T_{vj} = 160$ °C; 10 ms	40000	A
i^2t	$T_{vj} = 25$ °C; 8,3 ... 10 ms	10125000	A ² s
	$T_{vj} = 160$ °C; 8,3 ... 10 ms	8000000	A ² s
V_F	$T_{vj} = 25$ °C; $I_F = 3000$ A	max. 1,4	V
$V_{(TO)}$	$T_{vj} = 160$ °C	max. 0,72	V
r_T	$T_{vj} = 160$ °C	max. 0,19	mΩ
I_{RD}	$T_{vj} = 160$ °C; $V_{RD} = V_{RRM}$	max. 60	mA
$R_{th(j-c)}$	cont.	0,0385	K/W
	sin. 180	0,04	K/W
$R_{th(c-s)}$		0,01	K/W
T_{vj}		- 40 ... + 160 ¹⁾	°C
T_{stg}		- 40 ... + 125	°C
V_{isol}	a. c. 50 Hz; r.m.s.; 1 s / 1 min.	4800 / 4000	V~
M_s	to heatsink	6 ± 15%	Nm
M_t	to terminals	18 ± 15 %	Nm
a		5 * 9,81	m/s ²
m	approx.	2150	g
Case		A82	



SKKE



This technical information specifies semiconductor devices but promises no characteristics. No warranty or guarantee expressed or implied is made regarding delivery, performance or suitability.