

Conventional Rectifier Power Transformers • Chassis Mount



Signal's Rectifier Power transformers provide a wide variety of outputs. This series of conservatively designed transformers are manufactured using traditional materials and layer wound techniques.

General Specifications

- **Power** – 10 VA to 2800 VA
- **Dielectric Strength** – 1500VRMS Hipot
- **Primaries** – Single, tapped, or dual primaries (105V, 115V, 125V, 230V - 50-500 Hz)
- **Secondaries** – Center-tapped series or center-tapped parallel secondaries
- **Insulation** – Class A insulation (105°C)

Primary 50/60 HZ		Secondary RMS Rating		Mtg. Style	L	W	H	ML	MW	Mtg. Screw	Wgt
Single 115V	Dual* 115/230V	Series	Parallel								
10-1	DL-10-1	10VCT @ 1A	5VCT @ 2A	C	2.87" 73.0mm	1.75" 44.5mm	2.31" 58.7mm	2.37" 60.3mm	-	#8	1.0 lbs .45 kg
10-2	DL-10-2	10VCT @ 2A	5VCT @ 4A	C	3.12" 79.4mm	2.12" 53.9mm	2.75" 69.9mm	2.81" 71.4mm	-	#8	1.5 lbs .68 kg
10-4	DL-10-4	10VCT @ 4A	5VCT @ 8A	C	3.56" 90.5mm	2.37" 60.3mm	3.06" 77.7mm	3.12" 79.4mm	-	#8	2.3 lbs 1.04 kg
10-6	DL-10-6	10VCT @ 6A	5VCT @ 12A	B	3.37" 85.7mm	2.75" 69.9mm	2.81" 71.4mm	2.81" 71.4mm	2.12" 53.9mm	#8	3.3 lbs 1.50 kg
10-8	DL-10-8	10VCT @ 8A	5VCT @ 16A	B	3.37" 85.7mm	3.12" 79.4mm	2.81" 71.4mm	2.81" 71.4mm	2.50" 63.5mm	#8	4.0 lbs 1.81 kg
10-12	DL-10-12	10VCT @ 12A	5VCT @ 24A	B	3.75" 95.3mm	3.25" 82.6mm	3.12" 79.4mm	3.12" 79.4mm	2.50" 63.5mm	#8	5.0 lbs 2.27 kg
10-25	DL-10-25	10VCT @ 25A	5VCT @ 50A	B	4.50" 114.3mm	3.75" 95.3mm	3.75" 95.3mm	3.75" 95.3mm	2.75" 69.9mm	#10	8.7 lbs 3.95 kg
10-50‡	DL-10-50	10VCT @ 50A	5VCT @ 100A	B	5.25" 133.4mm	5.50" 139.7mm	4.37" 111.1mm	4.37" 111.1mm	3.62" 92.1mm	1/4	17.0 lbs 7.71 kg
10-100‡	DL-10-100	10VCT @ 100A	5VCT @ 200A	B	6.37" 162.0mm	7.25" 184.2mm	5.31" 134.9mm	5.31" 134.9mm	4.37" 111.1mm	1/4	34.5 lbs 15.65 kg
12.8-1	DL-12.8-1	12.8VCT @ 1A	6.4VCT @ 2A	C	2.87" 73.0mm	2.00" 50.8mm	2.31" 58.7mm	2.37" 60.3mm	-	#8	1.2 lbs .54 kg
12.8-2	DL-12.8-2	12.8VCT @ 2A	6.4VCT @ 4A	B	3.00" 76.2mm	2.50" 63.5mm	2.50" 63.5mm	2.50" 63.5mm	2.00" 50.8mm	#8	2.3 lbs 1.04 kg
12.8-4	DL-12.8-4	12.8VCT @ 4A	6.4VCT @ 8A	B	3.00" 76.2mm	2.87" 73.0mm	2.50" 63.5mm	2.50" 63.5mm	2.37" 60.3mm	#8	2.8 lbs 1.27 kg
12.8-6	DL-12.8-6	12.8VCT @ 6A	6.4VCT @ 12A	B	3.37" 85.7mm	3.06" 77.7mm	2.81" 71.4mm	2.81" 71.4mm	2.50" 63.5mm	#8	4.0 lbs 1.81 kg
12.8-8	DL-12.8-8	12.8VCT @ 8A	6.4VCT @ 16A	B	3.75" 95.3mm	3.12" 79.4mm	3.12" 79.4mm	3.12" 79.4mm	2.25" 57.2mm	#8	4.5 lbs 2.04 kg
12.8-12	DL-12.8-12	12.8VCT @ 12A	6.4VCT @ 24A	B	4.12" 104.8mm	3.25" 82.6mm	3.43" 87.3mm	3.43" 87.3mm	2.37" 60.3mm	#10	6.0 lbs 2.72 kg
12.8-25	DL-12.8-25	12.8VCT @ 25A	6.4VCT @ 50A	B	5.25" 133.4mm	4.25" 108.0mm	4.37" 111.1mm	4.37" 111.1mm	2.87" 73.0mm	#10	12.5 lbs 5.69 kg
12.8-50‡	DL-12.8-50	12.8VCT @ 50A	6.4VCT @ 100A	B	5.25" 133.4mm	6.00" 152.4mm	4.37" 111.1mm	4.37" 111.1mm	4.12" 104.8mm	1/4	20.7 lbs 9.39 kg
12.8-100‡	DL-12.8-100	12.8VCT @ 100A	6.4VCT @ 200A	B	6.37" 162.0mm	7.25" 184.2mm	5.31" 134.9mm	5.31" 134.9mm	4.37" 111.1mm	1/4	34.5 lbs 15.65 kg
16-1	DL-16-1	16VCT @ 1A	8VCT @ 2A	C	2.87" 73.0mm	2.00" 50.8mm	2.31" 58.7mm	2.37" 60.3mm	-	#8	1.2 lbs .54 kg
16-2	DL-16-2	16VCT @ 2A	8VCT @ 4A	C	3.12" 79.4mm	2.25" 57.2mm	2.75" 69.9mm	2.81" 71.4mm	-	#8	1.7 lbs .77 kg
16-4	DL-16-4	16VCT @ 4A	8VCT @ 8A	B	3.37" 85.7mm	2.75" 69.9mm	2.81" 71.4mm	2.81" 71.4mm	2.12" 53.9mm	#8	3.3 lbs 1.50 kg
16-6	DL-16-6	16VCT @ 6A	8VCT @ 12A	B	3.75" 95.3mm	3.12" 79.4mm	3.12" 79.4mm	3.12" 79.4mm	2.25" 57.2mm	#10	4.5 lbs 2.04 kg
16-8	DL-16-8	16VCT @ 8A	8VCT @ 16A	B	3.75" 95.3mm	3.50" 89.0mm	3.12" 79.4mm	3.12" 79.4mm	2.62" 66.7mm	#10	5.4 lbs 2.45 kg
16-12	DL-16-12	16VCT @ 12A	8VCT @ 24A	B	4.12" 104.8mm	3.87" 98.4mm	3.43" 87.3mm	3.43" 87.3mm	3.00" 76.2mm	#10	7.9 lbs 3.58 kg
16-25	DL-16-25	16VCT @ 25A	8VCT @ 50A	B	4.50" 114.3mm	5.37" 136.5mm	3.75" 95.3mm	3.75" 95.3mm	4.00" 101.6mm	#10	14.5 lbs 6.58 kg
16-50‡	DL-16-50	16VCT @ 50A	8VCT @ 100A	B	6.37" 162.0mm	5.70" 146.1mm	5.31" 134.9mm	5.31" 134.9mm	3.75" 95.3mm	1/4	26.5 lbs 12.02 kg
16-100‡	DL-16-100	16VCT @ 100A	8VCT @ 200A	B	7.50" 190.5mm	7.50" 190.5mm	6.37" 162.0mm	6.75" 171.5mm	4.62" 117.5mm	1/4	50.0 lbs 22.68 kg

Δ Available with dual primary only. Therefore, prefix "DL" is not required.
‡ Nominal 115V primary has added taps, I.E., 105/115/125V; Dual (DL) version is 115/230V only.

* Items are not normally in stock. They are standard designs generally available in 3-4 weeks.

See page 38 for determining RMS secondary current ratings.

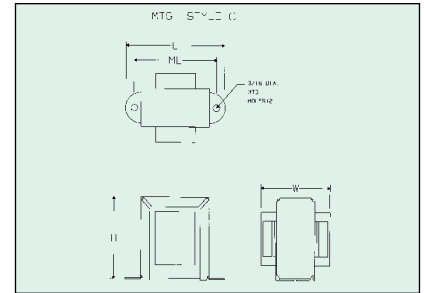
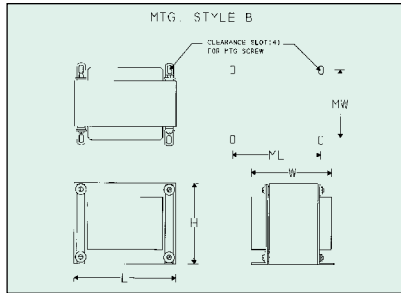
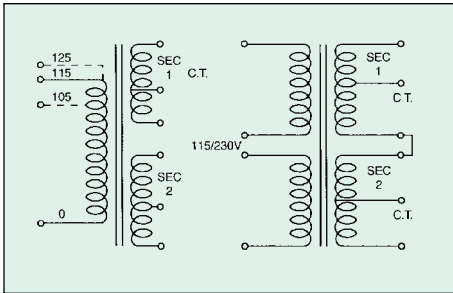
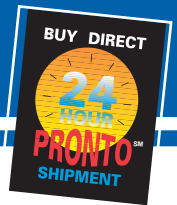
If you don't see a specific part that meets your requirement, see page 31 for our custom magnetics design data sheet.

Signal Transformer

CALL: 516-239-5777 • FAX: (24hrs) 516-239-7208

500 Bayview Avenue, Inwood, New York 11096

Conventional Rectifier Power Transformers • Chassis Mount (continued)



Primary 50/60 HZ		Second RMS Rating		Mtg. Style	L	W	H	ML	MW	Mtg. Screw	Wgt
Single 115V	Dual* 115/230V	Series	Parallel								
24-1	DL-24-1	24VCT @ 1A	12VCT @ 2A	B	3.00" 76.2mm	2.50" 63.5mm	2.50" 63.5mm	2.50" 63.5mm	2.00" 50.8mm	#8	2.3 lbs 1.04 kg
24-2	DL-24-2	24VCT @ 2A	12VCT @ 4A	B	3.00" 76.2mm	2.87" 73.0mm	2.50" 63.5mm	2.50" 63.5mm	2.37" 60.3mm	#8	2.9 lbs 1.32 kg
24-4	DL-24-4	24VCT @ 4A	12VCT @ 8A	B	3.75" 95.3mm	3.12" 79.4mm	3.12" 79.4mm	3.12" 79.4mm	2.25" 57.2mm	#8	4.5 lbs 2.04 kg
24-6	DL-24-6	24VCT @ 6A	12V.C.T. @ 12A	B	4.12" 104.8mm	3.25" 82.6mm	3.43" 87.3mm	3.43" 87.3mm	2.37" 60.3mm	#10	5.8 lbs 2.63 kg
24-8	DL-24-8	24VCT @ 8A	12VCT @ 16A	B	4.12" 104.8mm	3.87" 98.4mm	3.43" 87.3mm	3.43" 87.3mm	3.00" 76.2mm	#10	7.9 lbs 3.58 kg
24-12‡	DL-24-12	24VCT @ 12A	12VCT @ 24A	B	4.50" 114.3mm	4.50" 114.3mm	3.75" 95.3mm	3.75" 95.3mm	3.37" 85.7mm	#10	11.0 lbs 4.99 kg
24-20‡	DL-24-20	24VCT @ 20A	12VCT @ 40A	B	5.25" 133.4mm	4.75" 120.7mm	4.37" 111.1mm	4.37" 111.1mm	3.37" 85.7mm	1/4	15.3 lbs 6.95 kg
24-25‡	DL-24-25	24VCT @ 25A	12VCT @ 50A	B	5.25" 133.4mm	5.62" 142.9mm	4.37" 111.1mm	4.37" 111.1mm	4.12" 104.8mm	1/4	19.5 lbs 8.85 kg
24-50‡	DL-24-50	24VCT @ 50A	12VCT @ 100A	B	6.37" 162.0mm	6.25" 158.8mm	5.31" 134.9mm	5.31" 134.9mm	4.37" 111.1mm	1/4	31.3 lbs 14.20 kg
—	24-100Δ	24VCT @ 100A	12VCT @ 200A	B	7.50" 190.5mm	7.00" 177.8mm	6.37" 162.0mm	6.37" 162.0mm	4.12" 104.8mm	1/4	43.0 lbs 19.5 kg
36-1	DL-36-1	36VCT @ 1A	18VCT @ 2A	B	3.00" 76.2mm	2.75" 69.9mm	2.50" 63.5mm	2.50" 63.5mm	2.25" 57.2mm	#8	2.6 lbs 1.18 kg
36-2	DL-36-2	36VCT @ 2A	18VCT @ 4A	B	3.37" 85.7mm	2.93" 74.6mm	2.81" 71.4mm	2.81" 71.4mm	2.37" 60.3mm	#8	3.8 lbs 1.72 kg
36-4	DL-36-4	36VCT @ 4A	18VCT @ 8A	B	4.12" 104.8mm	3.37" 85.7mm	3.43" 87.3mm	3.43" 87.3mm	2.62" 66.7mm	#10	6.8 lbs 3.08 kg
36-6	DL-36-6	36VCT @ 6A	18VCT @ 12A	B	4.50" 114.3mm	3.75" 95.3mm	3.75" 95.3mm	3.75" 95.3mm	2.75" 69.9mm	#10	8.7 lbs 3.95 kg
36-8‡	DL-36-8	36VCT @ 8A	18VCT @ 16A	B	4.50" 114.3mm	4.50" 114.3mm	3.75" 95.3mm	3.75" 95.3mm	3.37" 85.7mm	#10	11.0 lbs 4.99 kg
36-12‡	DL-36-12	36VCT @ 12A	18VCT @ 24A	B	5.25" 133.4mm	5.00" 127.0mm	4.37" 111.1mm	4.37" 111.1mm	3.37" 85.7mm	1/4	15.0 lbs 6.80 kg
36-20‡	DL-36-20	36VCT @ 20A	18VCT @ 40A	B	6.37" 162.0mm	5.37" 136.5mm	5.31" 134.9mm	5.31" 134.9mm	3.37" 85.7mm	1/4	22.8 lbs 10.34 kg
36-25‡	DL-36-25	36VCT @ 25A	18VCT @ 50A	B	6.37" 162.0mm	5.75" 146.1mm	5.31" 134.9mm	5.31" 134.9mm	3.75" 95.3mm	1/4	26.5 lbs 12.02 kg
36-30‡	DL-36-30	36VCT @ 30A	18VCT @ 60A	B	6.37" 162.0mm	6.00" 152.4mm	5.31" 134.9mm	5.31" 134.9mm	4.37" 111.1mm	1/4	31.5 lbs 14.28 kg
—	36-50Δ	36VCT @ 50A	18VCT @ 100A	B	6.37" 162.0mm	7.25" 184.2mm	5.31" 134.9mm	5.31" 134.9mm	5.12" 130.2mm	1/4	40.0 lbs 18.14 kg

Δ Available with dual primary only. Therefore, prefix "DL" is not required.
‡ Nominal 115V primary has added taps, I.E., 105/115/125V; Dual (DL) version is 115/230V only.

* Items are not normally in stock. They are standard designs generally available in 3-4 weeks.

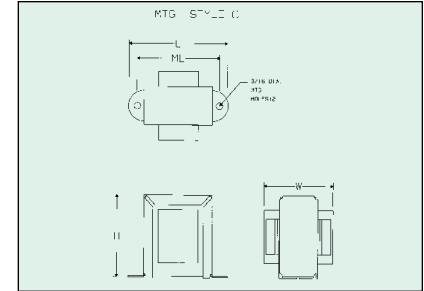
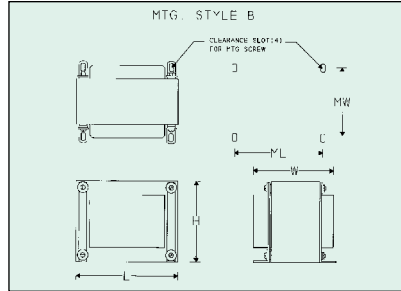
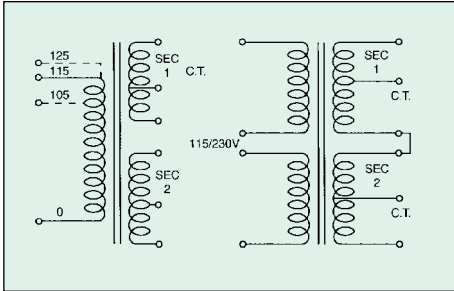
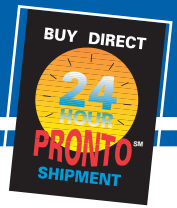
See page 38 for determining RMS secondary current ratings.

If you don't see a specific part that meets your requirement, see page 31 for our custom magnetics design data sheet.



CALL: 516-239-5777 • FAX: (24hrs) 516-239-7208
500 Bayview Avenue, Inwood, New York 11096

Conventional Rectifier Power Transformers • Chassis Mount (continued)



Primary 50/60 HZ		Second RMS Rating		Mtg. Style	L	W	H	ML	MW	Mtg. Screw	Wgt
Single 115V	Dual* 115/230V	Series	Parallel								
56-1	DL-56-1	56VCT @ 1A	28VCT @ 2A	B	3.37" 85.7mm	2.87" 73.0mm	2.81" 71.4mm	2.81" 71.4mm	2.25" 57.2mm	#8	3.5 lbs 1.59 kg
56-2	DL-56-2	56VCT @ 2A	28 VCT @ 4A	B	3.75" 95.3mm	3.25" 82.6mm	3.12" 79.4mm	3.12" 79.4mm	2.50" 63.5mm	#8	5.0 lbs 2.27 kg
56-4	DL-56-4	56VCT @ 4A	28VCT @ 8A	B	4.12" 104.8mm	3.75" 95.3mm	3.43" 87.3mm	3.43" 87.3mm	3.00" 76.2mm	#10	7.7 lbs 3.49 kg
56-6	DL-56-6	56VCT @ 6A	28VCT @ 12A	B	5.25" 133.4mm	4.25" 108.0mm	4.37" 111.1mm	4.37" 111.1mm	2.87" 73.0mm	#10	12.0 lbs 5.44 kg
56-8‡	DL-56-8	56VCT @ 8A	28VCT @ 16A	B	5.25" 133.4mm	5.00" 127.0mm	4.37" 111.1mm	4.37" 111.1mm	3.62" 92.1mm	#1/4	17.0 lbs 7.71 kg
56-12‡	DL-56-12	56VCT @ 12A	28VCT @ 24A	B	6.37" 162.0mm	5.25" 133.4mm	5.31" 134.9mm	5.31" 134.9mm	3.37" 85.7mm	1/4	22.0 lbs 9.98 kg
56-25‡	DL-56-25	56VCT @ 25A	28VCT @ 50A	B	6.37" 162.0mm	7.12" 181.0mm	5.31" 134.9mm	5.31" 134.9mm	5.12" 130.2mm	1/4	38.0 lbs 17.24 kg
—	56-50Δ	56VCT @ 50A	28VCT @ 100A	B	7.50" 190.5mm	7.50" 190.5mm	6.24" 158.8mm	6.75" 171.5mm	4.87" 123.8mm	1/4	56.3 lbs 25.54 kg
68-1	DL-68-1	68VCT @ 1A	34VCT @ 2A	B	3.37" 85.7mm	2.93" 74.6mm	2.81" 71.4mm	2.81" 71.4mm	2.37" 60.3mm	#8	3.8 lbs 1.72 kg
68-2	DL-68-2	68VCT @ 2A	34VCT @ 4A	B	4.12" 104.8mm	3.37" 85.7mm	3.43" 87.3mm	3.43" 87.3mm	2.62" 66.7mm	#10	6.8 lbs 3.08 kg
68-4	DL-68-4	68VCT @ 4A	34VCT @ 8A	B	4.50" 114.3mm	4.50" 114.3mm	3.75" 95.3mm	3.75" 95.3mm	3.37" 85.7mm	#10	11.5 lbs 5.22 kg
68-6‡	DL-68-6	68VCT @ 6A	34VCT @ 12A	B	5.25" 133.4mm	5.00" 127.0mm	4.37" 111.1mm	4.37" 111.1mm	3.37" 85.7mm	1/4	15.0 lbs 6.80 kg
68-8‡	DL-68-8	68VCT @ 8A	34VCT @ 16A	B	5.25" 133.4mm	5.50" 139.7mm	4.37" 111.1mm	4.37" 111.1mm	3.87" 98.4mm	1/4	19.0 lbs 8.62 kg
68-12‡	DL-68-12	68VCT @ 12A	34VCT @ 24A	B	6.37" 162.0mm	5.75" 146.1mm	5.31" 134.9mm	5.31" 134.9mm	3.75" 95.3mm	1/4	26.5 lbs 12.02 kg
—	68-25Δ	68VCT @ 25A	34VCT @ 50A	B	6.37" 162.0mm	7.25" 184.2mm	5.31" 134.9mm	5.31" 134.9mm	5.12" 130.2mm	1/4	39.7 lbs 18.01 kg
80-1	DL-80-1	80VCT @ 1A	40VCT @ 2A	B	3.37" 85.7mm	3.06" 77.7mm	2.81" 71.4mm	2.81" 71.4mm	2.50" 63.5mm	#8	4.0 lbs 1.81 kg
80-2	DL-80-2	80VCT @ 2A	40VCT @ 4A	B	4.12" 104.8mm	3.37" 85.7mm	3.43" 87.3mm	3.43" 87.3 mm	2.62" 66.7mm	#10	6.8 lbs 3.08 kg
80-4	DL-80-4	80VCT @ 4A	40VCT @ 8A	B	5.25" 133.4mm	4.25" 108.0mm	4.37" 111.1mm	4.37" 111.1mm	2.87" 73.0mm	1/4	12.3 lbs 5.58 kg
80-6‡	DL-80-6	80VCT @ 6A	40VCT @ 12A	B	5.25" 133.4mm	5.50" 139.7mm	4.37" 111.1mm	4.37" 111.1mm	3.87" 98.4mm	1/4	19.0 lbs 8.62 kg
80-8‡	DL-80-8	80VCT @ 8A	40VCT @ 16A	B	6.37" 162.0mm	5.25" 133.4mm	5.31" 134.9mm	5.31" 134.9mm	3.25" 82.6mm	1/4	20.5 lbs 9.30 kg
80-12‡	DL-80-12	80VCT @ 12A	40VCT @ 24A	B	6.37" 162.0mm	6.00" 152.4mm	5.31" 134.9mm	5.31" 134.9mm	4.12" 104.8mm	1/4	29.0 lbs 13.15 kg
—	80-25Δ	80VCT @ 25A	40VCT @ 50A	B	7.50" 190.5mm	6.50" 165.1mm	6.25" 158.8mm	6.75" 171.5mm	3.87" 98.4mm	1/4	40.3 lbs 18.28 kg

Δ Available with dual primary only. Therefore, prefix "DL" is not required.
‡ Nominal 115V primary has added taps, I.E., 105/115/125V; Dual (DL) version is 115/230V only.

* Items are not normally in stock. They are standard designs generally available in 3-4 weeks.

See page 38 for determining RMS secondary current ratings.

If you don't see a specific part that meets your requirement, see page 31 for our custom magnetics design data sheet.



CALL: 516-239-5777 • FAX: (24hrs) 516-239-7208
500 Bayview Avenue, Inwood, New York 11096